

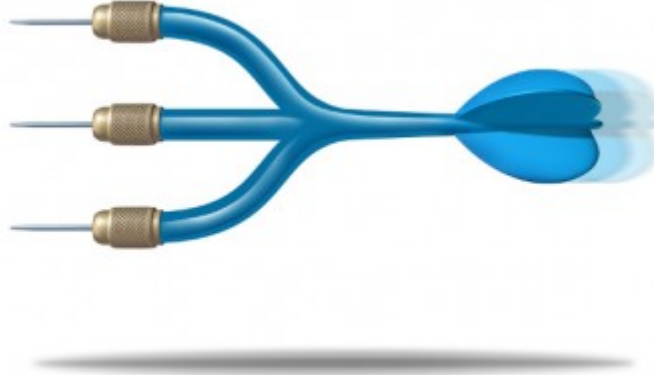
Enabling Workflows in Livermore Computing

LC User Meeting December 2020

David Fox
fox18@llnl.gov



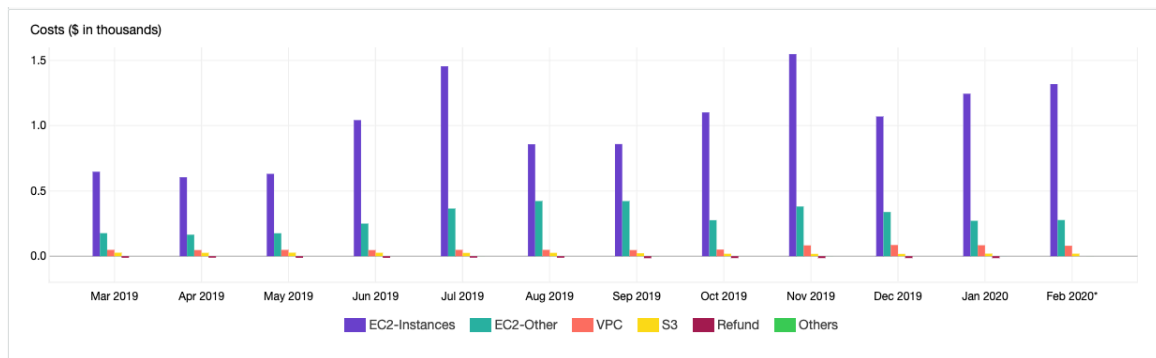
Livermore Computing's Three-Pronged Approach



- Amazon Web Services
- Containers on HPC Systems
- Persistent Data Services Platform

Amazon Web Services

- Leverage AWS for quick and **hopefully** cheap deployments
- Amazon Virtual Private Cloud
- A number of issues/concerns results in not much use.
- A few successful projects using the Amazon Public cloud
 - ZFS on Linux
 - Spack
- LivIT details wrt AWS: <https://livcloud.llnl.gov/>



AWS has not been a great fit

Containers on HPC systems

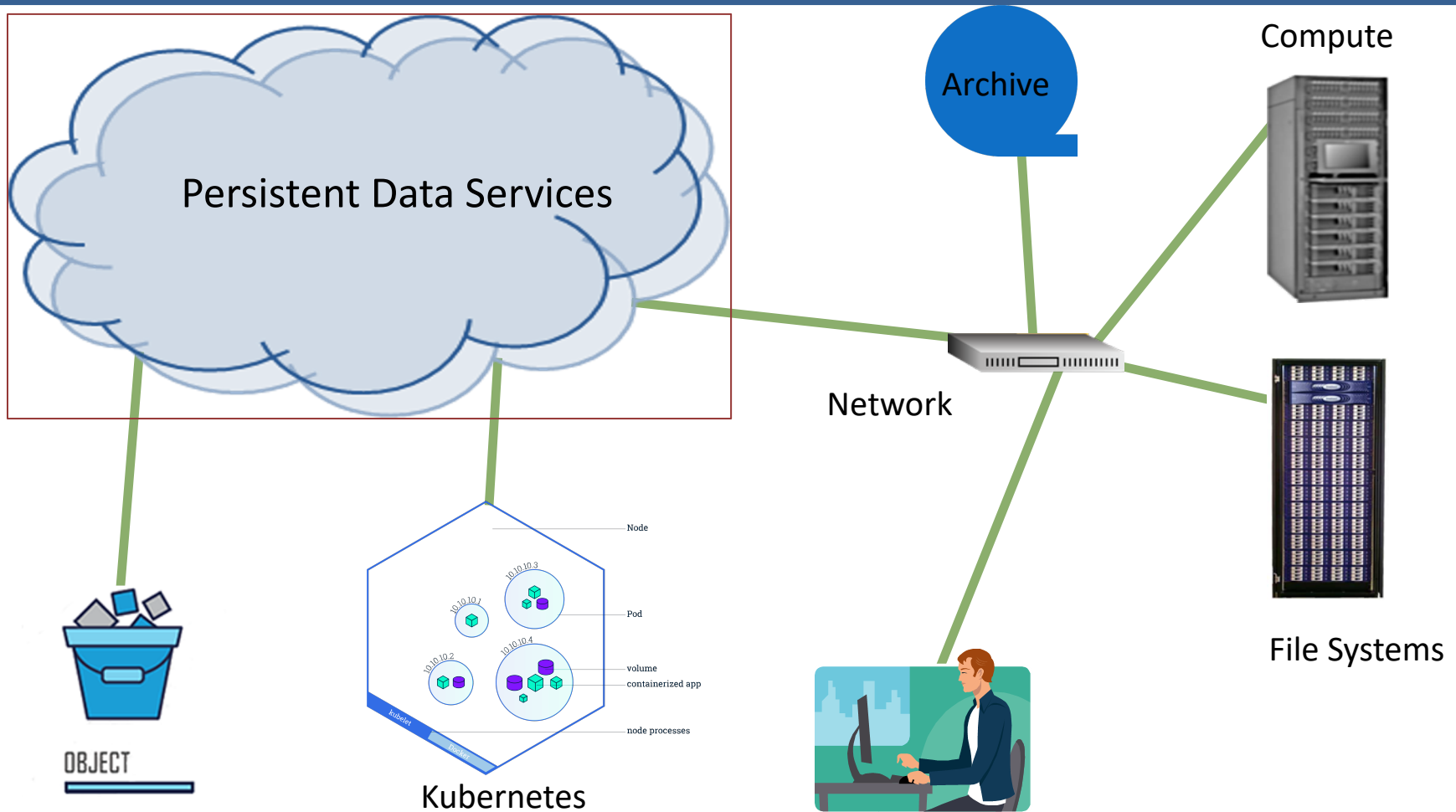


Sierra



Singularity

A Persistent Data Services Platform



LC CZ enclave – RZ system coming soon

A Persistent Data Services Platform Goals

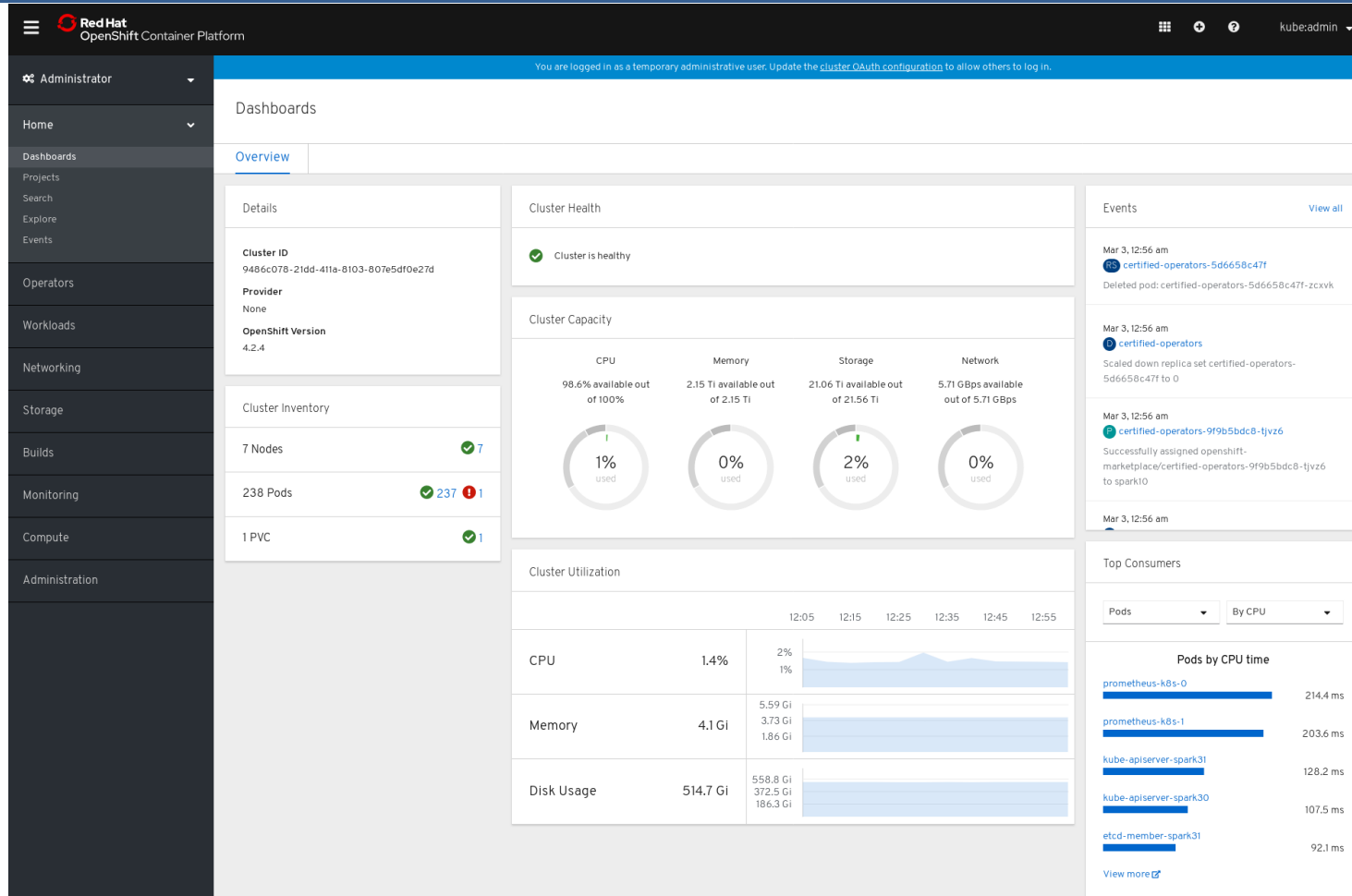
- Deploy a production quality scientific focused cloud platform in our Collaboration Zone.
- Identify both customer and internal to LC applications that can be ported and deployed onto this platform.
- Deploy an Object Storage system that is usable both by the Persistent Data Service Platform and from the HPC systems.

A Persistent Service Platform: Technologies

- Kubernetes
 - RedHat OpenShift
- Persistent Storage
 - NetApp Trident – AFF Filers
- Object Storage
 - NetApp – Storage Grid



A Persistent Data Services Platform: Openshift



A Persistent Data Services Platform: Simple Deployments

- Anticipated first apps to deploy – database type systems



More to come

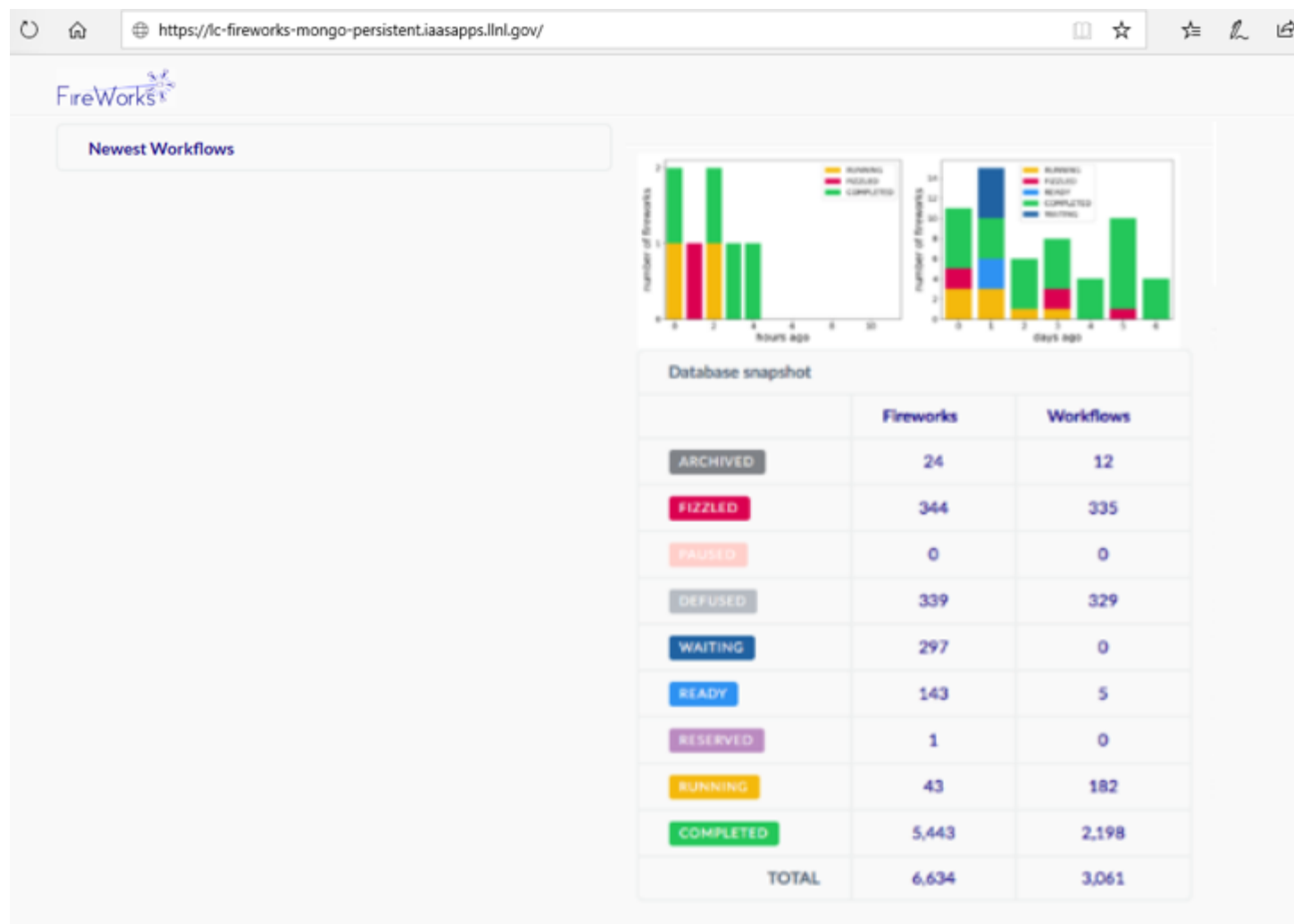
A Persistent Data Services Platform: Workflow Deployments

- Investigating and working with customers on various workflow frameworks.
 - Merlin (LLNL)
 - Sina (LLNL)
 - FireWorks
 - Apache Airflow
 - AiiDA (Automated Interactive Infrastructure and Database for Computational Science)



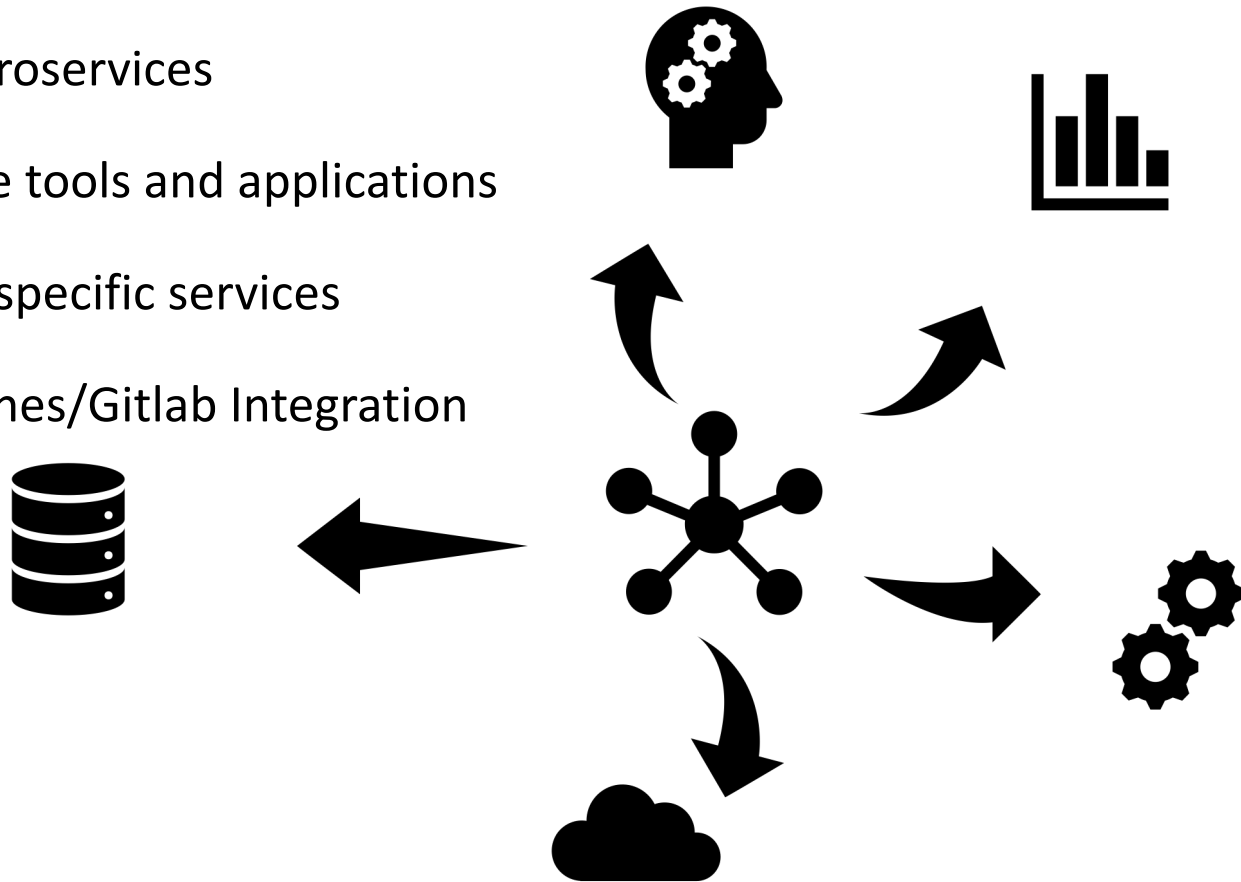
What workflow tools are you interested in?

Fireworks Web Interface – Workflow Status



A Persistent Data Services Platform: Advanced Deployments

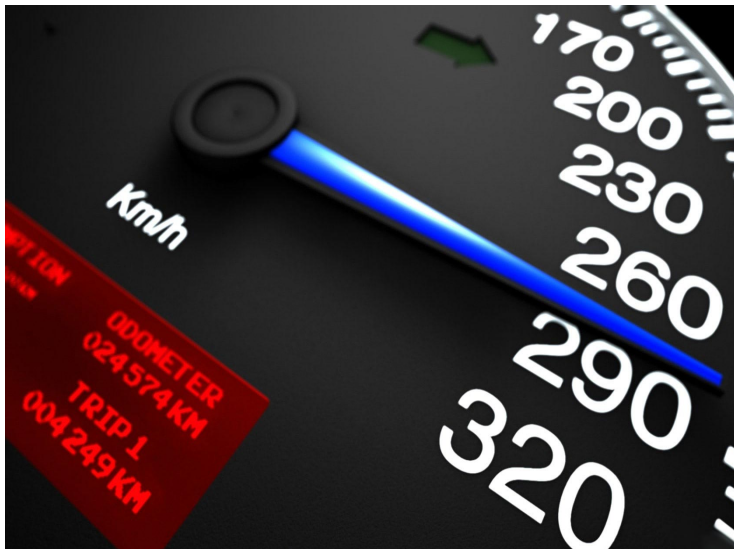
- Suite of Microservices
- Data Science tools and applications
- Application specific services
- CI/CD pipelines/Gitlab Integration



Work in progress

Challenges

- Multi-Tenancy Security
- Security compliance
- Knowledge base
- Rapid pace of change



More Information



- <https://lc.llnl.gov/cloud/>
- lc-hotline@llnl.gov or call (925) 422-4531.



Disclaimer

This document was prepared as an account of work sponsored by an agency of the United States government. Neither the United States government nor Lawrence Livermore National Security, LLC, nor any of their employees makes any warranty, expressed or implied, or assumes any legal liability or responsibility for the accuracy, completeness, or usefulness of any information, apparatus, product, or process disclosed, or represents that its use would not infringe privately owned rights. Reference herein to any specific commercial product, process, or service by trade name, trademark, manufacturer, or otherwise does not necessarily constitute or imply its endorsement, recommendation, or favoring by the United States government or Lawrence Livermore National Security, LLC. The views and opinions of authors expressed herein do not necessarily state or reflect those of the United States government or Lawrence Livermore National Security, LLC, and shall not be used for advertising or product endorsement purposes.